






PLUG AND GO DRIVER BACKREST – VICTORY

1656

THANK YOU FOR CHOOSING KÜRYAKYN!

PROTECT YOURSELF AND OTHERS FROM POSSIBLE INJURY AND PROPERTY DAMAGE OR LOSS. PAY CLOSE ATTENTION TO ALL INSTRUCTIONS, WARNINGS, CAUTIONS, AND NOTICES REGARDING THE INSTALLATION, USE, AND CARE OF THIS PRODUCT.


 WARNING	THIS INDICATION ALERTS YOU TO THE FACT THAT IGNORING THE CONTENTS DESCRIBED HEREIN CAN RESULT IN POTENTIAL DEATH OR SERIOUS INJURY.
 CAUTION	This indication alerts you to the fact that ignoring the contents described herein can result in minor or moderate potential injury.
 NOTICE	This indication alerts you to the fact that ignoring the contents described herein may negatively affect product performance and functionality or damage the product itself or the product to which it is being attached.

MAKE SURE THE FOLLOWING PARTS HAVE BEEN INCLUDED IN THE KIT:

- 1 Backrest
- 1 Receiver
- 1 Hardware Kit containing:
 - 2 Spacers
 - 2 M8 X 1.25 X 50MM Hex Head Screws
 - 2 M8 Flat Washer
 - 2 M8 Split Lock Washer
 - 1 Rubber Bumper Strip
- 1 Installation instructions

TOOLS SUGGESTED:

Set of metric hex wrenches, set of metric sockets and ratchet, flat blade screwdriver, warm soapy water and a clean rag, ft-lbs torque wrench

 **WARNING**

THE END USER'S SAFETY DEPENDS UPON PROPER INSTALLATION OF THIS PRODUCT. IF A STEP IN THIS SET OF INSTRUCTIONS IS NOT WITHIN YOUR CAPABILITIES OR YOU DO NOT HAVE THE CORRECT TOOLS, HAVE YOUR DEALER PERFORM THE PROCEDURE. IMPROPER INSTALLATION OF THIS PRODUCT COULD RESULT IN DEATH OR SERIOUS INJURY.

 **NOTICE**

Avoid damage to the motorcycle. Protect painted surfaces with a soft cloth or service cover.

CUSTOMER SERVICE

877.370.3604 (toll free)

INSTALLATION QUESTIONS

techsupport@kuryakyn.com
or call 715.247.2983

LIMITED WARRANTY

Kuryakyn warrants that any Kuryakyn products sold hereunder, shall be free of defects in materials and workmanship for a period of one (1) year from the date of purchase by the consumer excepting the following provisions:

- Kuryakyn shall have no obligation in the event the customer is unable to provide a receipt showing the date the customer purchased the product(s).
 - The product must be properly installed, maintained and operated under normal conditions.
 - Kuryakyn makes no warranty, expressed or implied, with respect to any gold plated products.
 - Kuryakyn shall not be liable for any consequential and incidental damages, including labor and paint, resulting from failure of a Kuryakyn product, failure to deliver, delay in delivery, delivery in nonconforming condition, or for any breach of contract or duty between Kuryakyn and a customer.
- Kuryakyn products are often intended for use in specific applications. Kuryakyn makes no warranty if a Kuryakyn product is used in applications other than intended.
- Kuryakyn electrical products are warranted for one (1) year from the date of purchase by the consumer. L.E.D.'S contained in components of Kuryakyn products will be warranted for defects in materials and workmanship for 3 years from the date of purchase where as all other components shall be warranted for one(1) year. This includes, but is not limited to; control modules, wiring, chrome & other components.

• Kuryakyn makes no warranty of any kind in regard to other manufacturer's products distributed by Kuryakyn. Kuryakyn will pass on all warranties made by the manufacturer and where possible, will expedite the claim on behalf of the customer, but ultimately, responsibility for disposition of the warranty claim lies with the manufacturer.

ABOUT OUR CATALOG

For purchasing Kuryakyn® products, you can receive a complete catalog free of charge. Send the Proof-of-Purchase below with your address to: Kuryakyn
454 County Road V V
Somerset, WI 54025-9031
Please indicate either Accessories Catalog for Harley-Davidson® or GL & Metric Cruisers.

Be sure to ask your local dealer about other Kuryakyn® products, the motorcycle parts and accessories designed for riders by riders.

©2005 Kuryakyn USA® All Rights reserved.



STEP 1 Read and understand all steps in the instructions before starting the installation. Park the motorcycle on a hard, level surface and turn off the ignition.

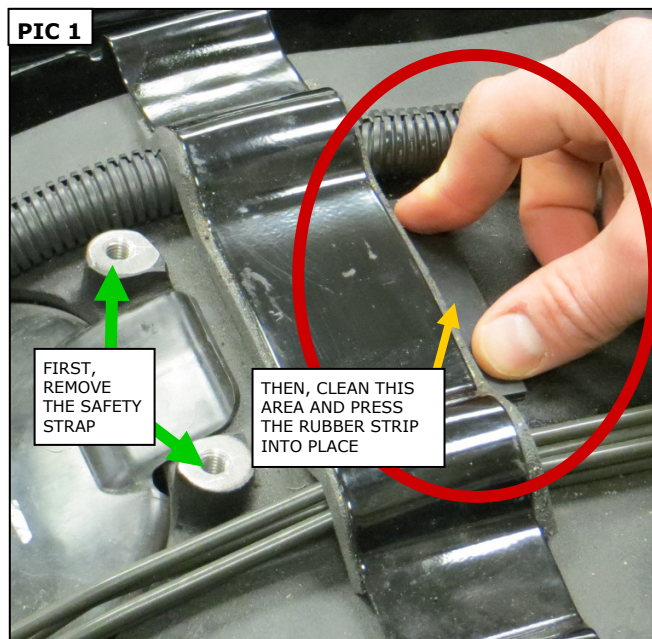
BIKE PREP:

STEP 2 Remove the seat.

STEP 3 Refer to **PIC 1**. Remove the two screws securing the passenger safety strap; set the screws aside they will not be reused.

STEP 4 Using warm soapy water and a clean rag, remove all grease, oil, dirt and other debris from the area shown in **PIC 1**. Allow the area to dry completely.

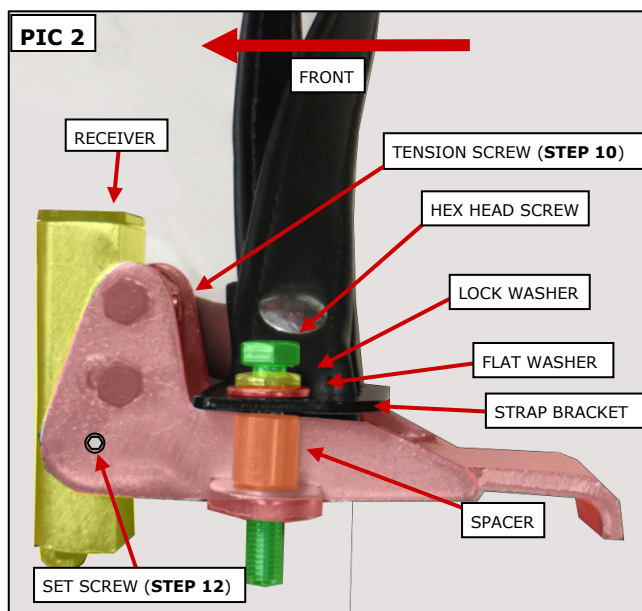
STEP 5 Locate the included Rubber Bumper Strip. Rub the adhesive backing with your finger nail to activate the adhesive; remove and discard the backing. Press the Rubber Bumper into place as shown in **PIC 1** for one minute.



ASSEMBLE THE RECEIVER:

STEP 6 Refer to **PIC 2**. Locate the included Spacers, Lock Washers, Flat Washers, Hex Head Screws, and Receiver.

STEP 7 Assemble the hardware, safety strap and receiver as shown in **PIC 2**.



-cont.-

INSTALL AND ADJUST THE BACKREST:

STEP 8 Refer to **PIC 3**. Position the assembly over the safety strap holes; thread the hex head screws into the holes in the frame. **Torque the hex head screws to 18-20 ft-lbs (24-27 Nm).**

STEP 9 Slide the Backrest into the Receiver.

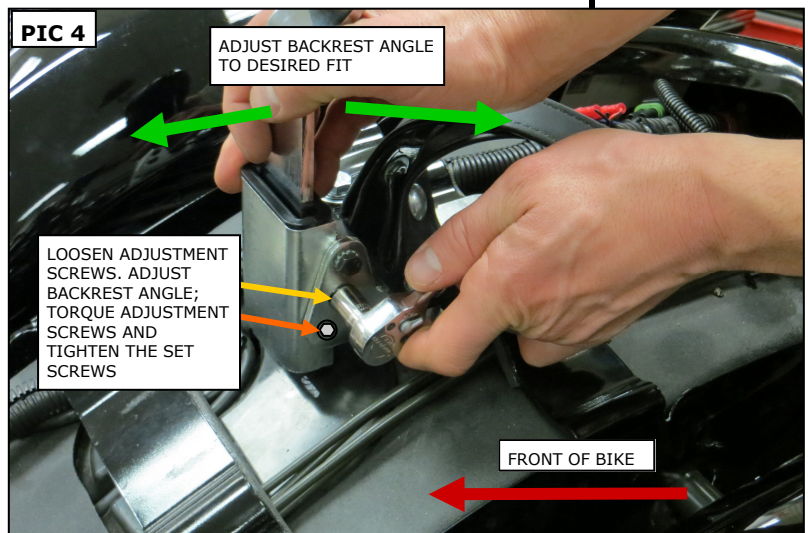
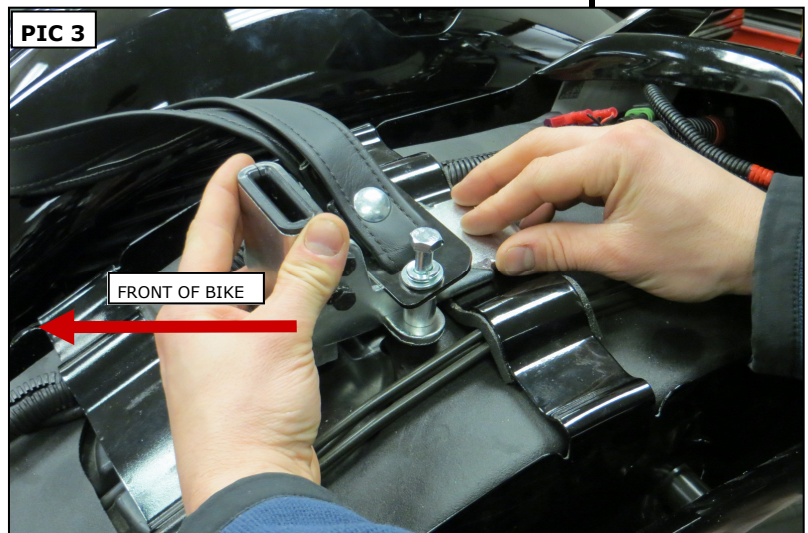
STEP 10 Refer to **PIC 2**. Locate the tension screw on the backside of the Receiver.

Use a flat blade screwdriver to adjust the tension screw. Adjust the screw so that the backrest is firmly secured in the Receiver and easily removable.

Turn the screw clockwise to increase the tension; turn the screw counter-clockwise to decrease tension.

STEP 10 Refer to **PIC 4**. Loosen the angle adjustment screws on the Receiver.

NOTE: **The lower screw slots on both sides of the Receiver allow for forward and rearward Backrest angle adjustment.**



STEP 11 Adjust the Backrest angle; temporarily tighten the adjustment screws; reinstall the seat, sit on the bike and confirm backrest angle is acceptable.

STEP 12 Remove the seat, make any necessary adjustments, then **torque the adjustment screws to 8-9 ft-lbs (10.8-12.2 Nm)** and tighten set screws (refer to **PIC 4**).



AFTER INSTALLING THE SEAT, PULL UPWARD ON SEAT TO ENSURE IT IS LOCKED IN POSITION. WHILE RIDING, A LOOSE SEAT CAN SHIFT CAUSING LOSS OF CONTROL, WHICH COULD RESULT IN DEATH OR SERIOUS INJURY.



It is the end user's responsibility to ensure that all of the fasteners (including pre-assembled) are tightened before operation of the motorcycle. Küryakyn will not provide warranty coverage on products or components lost due to improper installation or lack of maintenance. Periodic inspection and maintenance are required on all fasteners.

Ride On!